

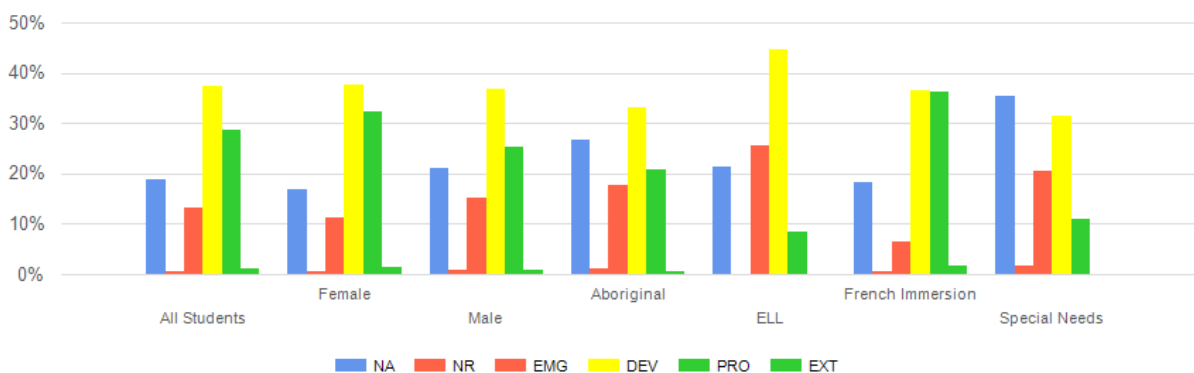
District Numeracy Assessment

School District 73 DNA Pre 2021-2022 Report

Teachers may administer the DNA throughout the school year to inform instruction and monitor student progress. Some schools may use the Pre (Fall) and Post (Spring) information to create or revise school goals. In order to support school and district planning, the district collects and collates baseline information provided on the District Numeracy Assessment for grades 3 and 6 in the Fall.

Grade 3 and 6 All Students (standard filters, DNA Pre-Overall Sub Assessment Item)

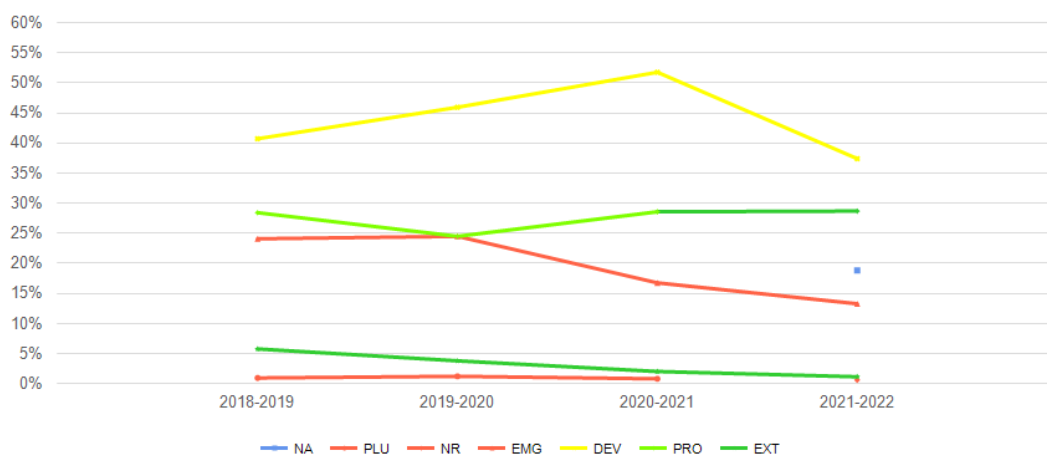
District Numeracy Assessment - DNA Pre



The standard filters report will provide details for the main subgroups. The all-student section shows 29% of students are proficient or extending for the DNA Pre - Overall strand.

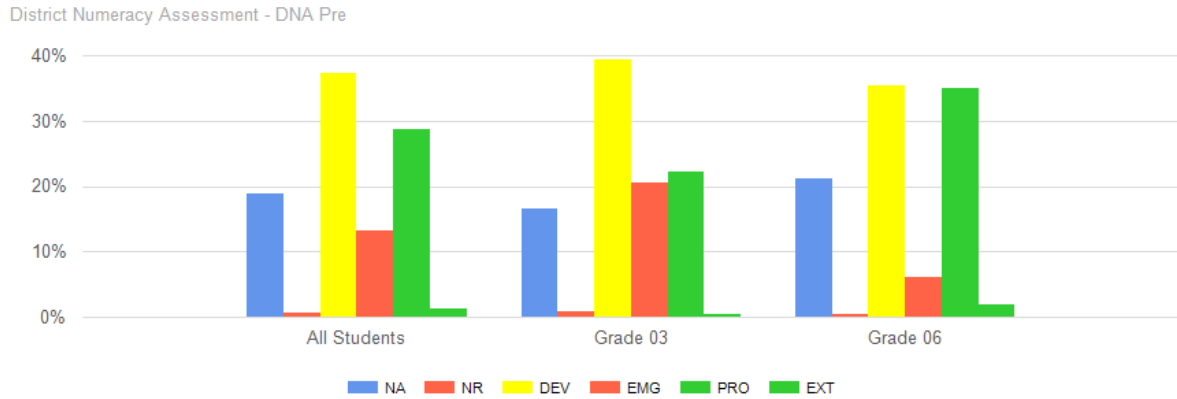
The student score values are not in the correct order at this time, that is a known issue in EDPlan currently and is being corrected (Should read NA, PLU, EMG, DEV, PRO, EXT). NA refers to students that have no assessment data entered.

District Numeracy Assessment - DNA Pre

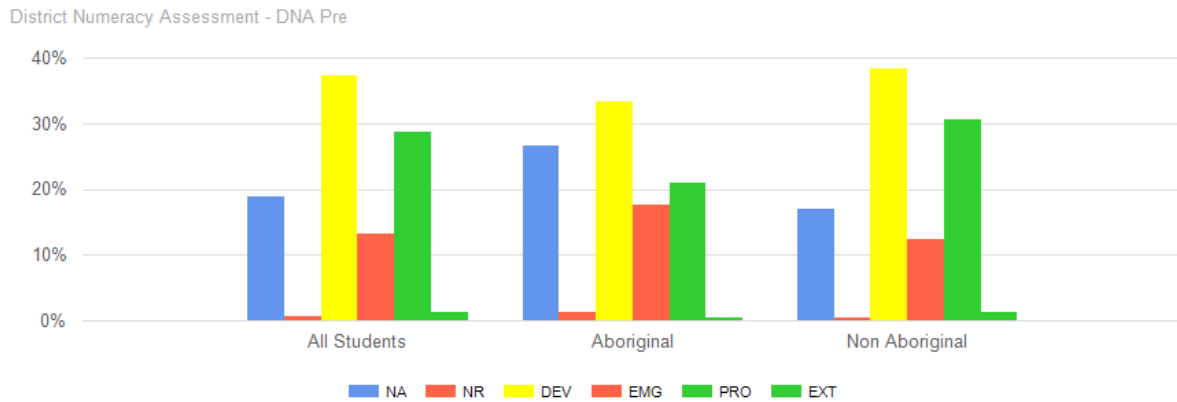


The trend line for the nonfiction reading assessment Sub assessment Item Overall shows consistent results over the last five years. The drop in the Developing score for this school year reflects the number of students that did not write the assessment (the blue dot at 17%).

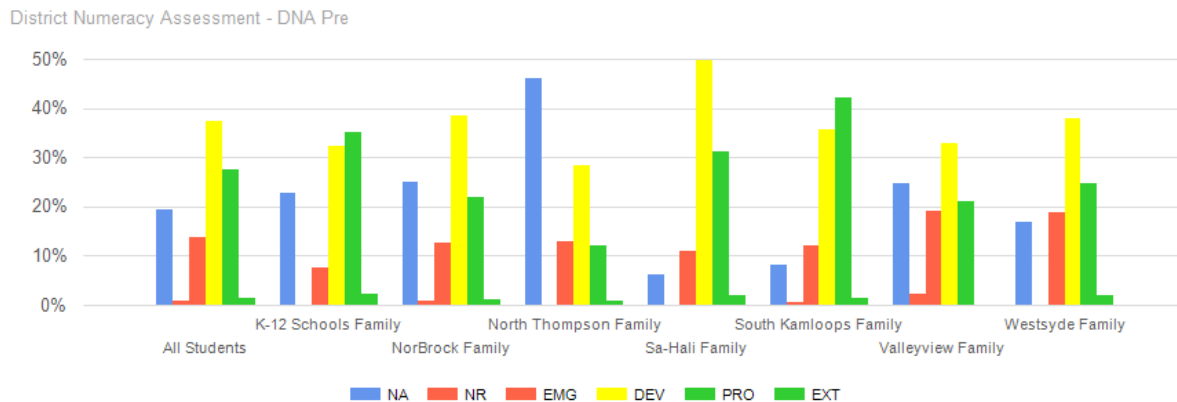
Grade Breakdown All Students (grade filter, DNA Pre-Overall Sub Assessment Item)



Aboriginal Students (Indigenous Filter, DNA Pre -Overall Sub Assessment Item)

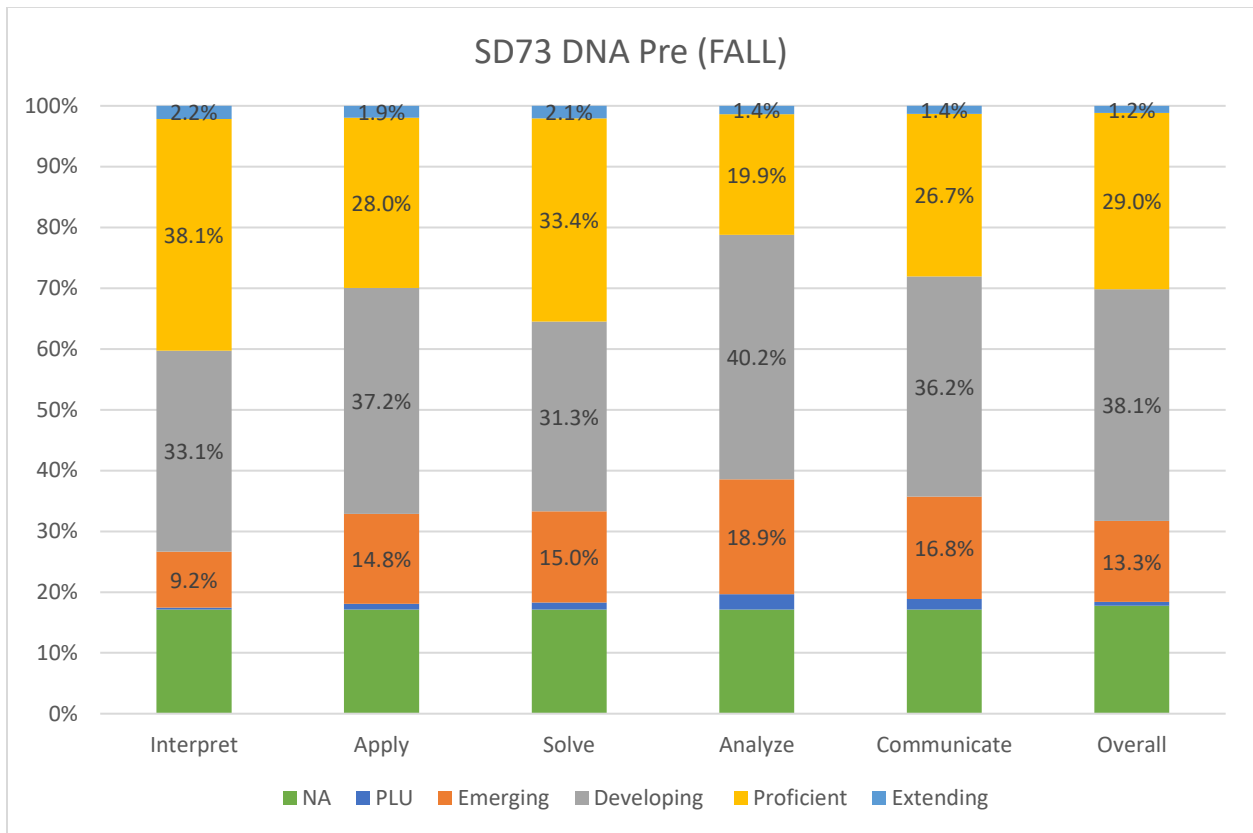


Family of Schools (Report only available at District Level) (DNA Pre-Overall Sub Assessment Item)



Grade 3 and 6 All Students (this graph not available in EDPlan till March 2022)

DNA Pre 2021-2022



This graph highlights the students score for all strands of the assessment. Analyze and Communicate are two strands that show the most emerging scores, while Interpret and Solve show more proficient scores at the district level.

Report Building in EDPlan Insight

When creating different charts within EDPlan Insight, use the flexible report builder and change the filters for the report you wish to view. The examples below were used to create this report. You may use other filters to show more subgroups. This guide works with all district and ministry assessments listed in the flexible report.

Group By: (Standard Filters, Indigenous, Grade)

Sub-Assessment Item: (Overall, or each strand individually)

Show Trend: provides a trend line for the last five years

EDPlan Insight™

Home > Leadership > Reports > Leadership Report

School Year: 2021-2022 School Zone: K-12 Schools Family, NorBrock Farm School: @KOOLA E Perry Elementary, Aber

Teacher: All Teachers Grade: Kindergarten FT, Grade 01, Grade 0 Gender: F, M

Indigenous: Aboriginal, Non-Aboriginal, Unknown Band: Aboriginal: Non-Band, Aboriginal: Unknown French Immersion: Core French, Early French Immersion

ELL: ELL, Non ELL, Unknown Special Needs: All Sped, Non-Sped, Unknown Special Needs Design: Autism Spectrum Disorder, Deaf or Hard of Hearing

Children In Care: Yes, No Assessment: Nonfiction Reading Assessment Term/Sub-Assessment: NFRA - NFRA FALL

Sub-Assessment Item: NFRA - NFRA FALL - Overall Group By: Grade Show Trend: Yes

Show Filter Selection Page: Yes

Teachers can view a detailed report for their students in the REPORTS Tile, GENERAL Reports, Assessment Class Overview Report. This report details all the strand information for each student for district assessments that are entered. By Clicking on a student's name you access the student profile.

Grade	DNA										NFRA													
	DNA Pre										NFRA FALL													
	Expanded	Internet	Apply	Solve	Write	Communicate	Overall	Determining Importance	Estimating Information from Text	Vocabulary	Inferencing	Critical Analysis	Overall	Accuracy	Fluency									
05	2	1	2	2	2	2	2	3	3	1	1	1	2	2	2									
05	3	2	3	2	3	3	3	3	3	3	3	3	3	3	1	1								
05	2	2	2	2	2	2	2	2	3	3	2	2	2	2	2									
05	3	2	2	2	2	2	2	3	3	2	2	2	3	2	2									
05	2	2	2	2	2	2	2	2	3	3	2	2	3	2	2									
05	2	2	3	2	2	2	2																	
05	3	3	3	2	3	3	3	3	3	3	2	2	3	1	1									
05	2	1	1	1	1	1	1	2	2	1	1	1	1	2	2									

EDPlan Insight™

Home > Reports > General Reports

Assessment Class Overview Report

Assessment Data Form

Assessment Rec...